

MOTOR SPECIFICATIONS:

1/2 HP M100-FS motor operator. UL listed. Operator includes open drip proof motor removable without resetting of limit switches. UL listed thermal overload protection, electric brake and rotary limit switches, transformer with 24 volt control secondary; all components pre wired to terminal block.

ALARM CURRENT REQUIREMENTS:

Normally closed contact that opens upon alarm.

CURRENT CHARACTERISTICS:

120 V 1 PH 60 HZ

Electrical current must be verified in writing before job is released for manufacture; current verified and found correct.

Signed:

ELECTRICAL EQUIPMENT LIST:

1 - Electric sensing edge w/ SJO coil cord.

NOTE - If a wireless sensing edge is used, the operator must be wired to gravity close on alarm.

BOTTOM BAR LOCKING:

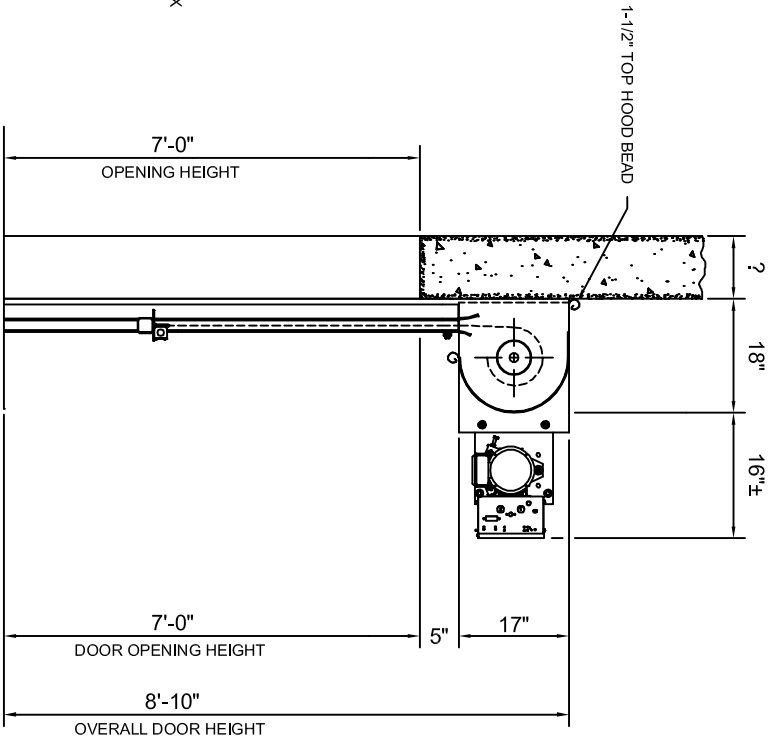
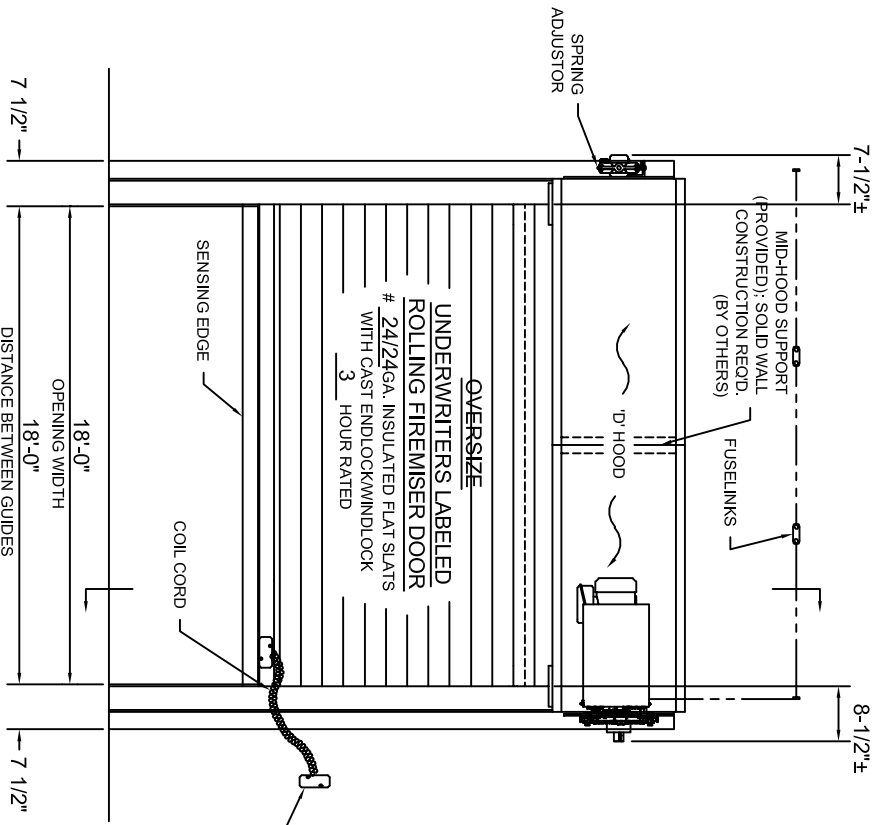
QUANTITY & MARK:

(1)

MATERIAL & FINISH:

- Front slat - Galvanized steel with Galvalux™ coating system. Finish color: Cornell gray
- Back slat - Galvanized steel with Galvalux™ coating system. Finish color: Cornell gray
- Bottom Bar - Structural steel; Cornell gray polyester powder coating
- Guides - Structural steel; Cornell gray polyester powder coating
- Hood - Galvanized steel with Galvalux™ coating system. Finish color: Cornell gray
- Plain Steel - Powder coated Cornell gray

NOTE: This door **NOT** to be mounted in a required means of egress!



ELEVATION (COIL SIDE) AND SECTION VIEW

See drawing # Web999137 001 B for guide detail.

04-14-2011	PRODUCT CODE:
INS_FDR	

Drawing Date:05/26/11 Time:16:32:58:95

MODEL #:	JOB #:
MFM 6M 44GP	Web999137 001 A

AGENT:	CONTRACTOR:

ARCHITECT:	
------------	--

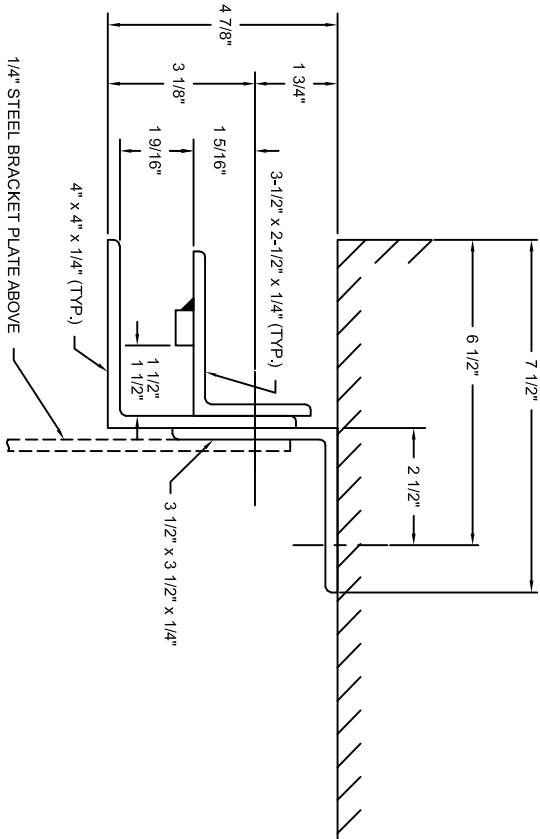
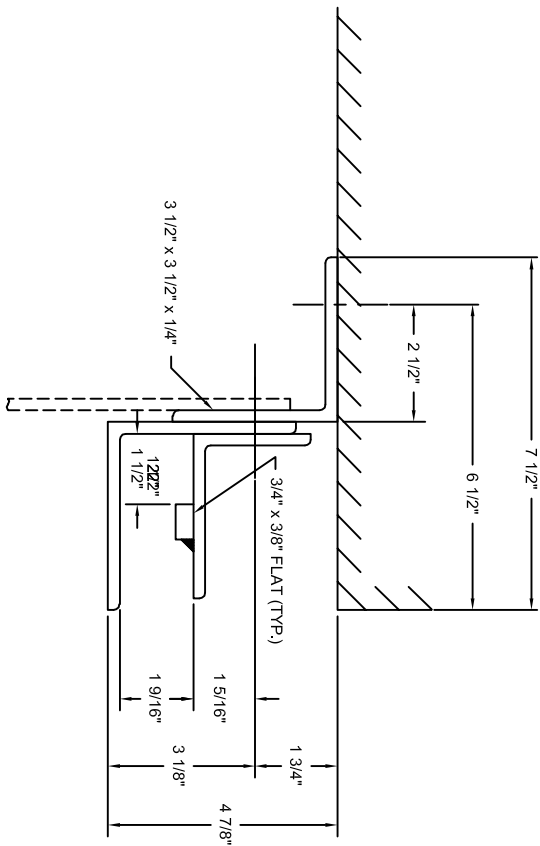
JOB:	
Insulated Rolling Fire Door	

SAFE AND SECURE	
-----------------	--

www.cornelliron.com	
---------------------	--

REVISION	DATE	BY
ORIGINAL DRAWING		WEB

NOTE: Wall construction detail shown is for illustrative purposes only and does not imply compliance with building requirements. Wall construction and closure installation shall be in accordance with the local authority having jurisdiction requirements.



GA0417 - 4 7/8"

GA0417 - 4 7/8"

WALL FASTENERS:

AT MAXIMUM 30" ON CENTER

- ASSEMBLY FASTENERS:**
- AT MAXIMUM 22" ON CENTER
- SCREW, HEX HEAD, GR 8, PLD, 1/2-13 X 2"
 - (3) WSHR, FLAT, HIGH STR, PLD, 1/2" N, 0.531 ID X 1.062 OD X 0.095 THK
 - WSHR, FLAT, FIBER, 1/2", 0.563 ID X 1.375 OD X .062 THK
 - NUT, HEX, GR 8, PLD, 1/2-13

WALL FASTENERS:

AT MAXIMUM 30" ON CENTER

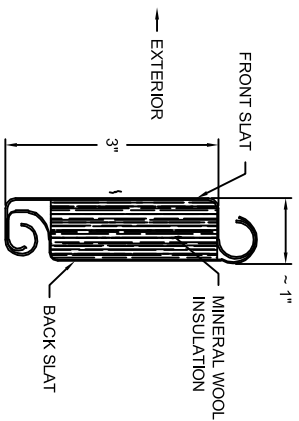
- 1/2" x 5-1/2" Hilti Kwik Bolt 3
- (2) 1/2" FLAT WASHER USS PLATED - 9/16" x 1 3/8" x .062" FLAT WASHER (FIBER)

ASSEMBLY FASTENERS:

AT MAXIMUM 22" ON CENTER

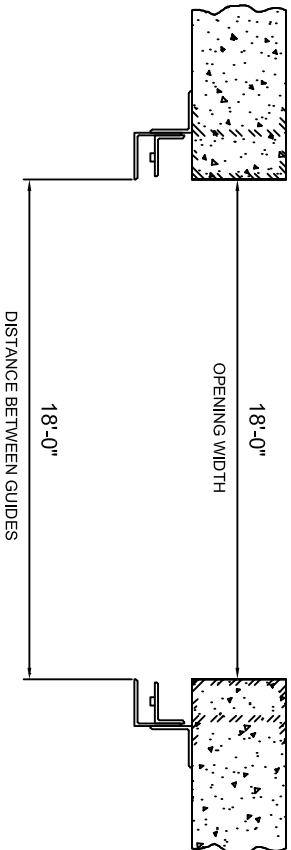
- SCREW, HEX HEAD, GR 8, PLD, 1/2-13 X 2"
- (3) WSHR, FLAT, HIGH STR, PLD, 1/2" N, 0.531 ID X 1.062 OD X 0.095 THK
- WSHR, FLAT, FIBER, 1/2", 0.563 ID X 1.375 OD X .062 THK
- NUT, HEX, GR 8, PLD, 1/2-13

CG651P SLAT

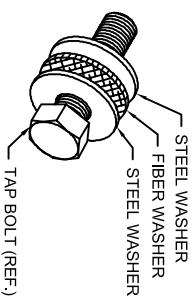


PLAN OF OPENING

MK:



WALL FASTENER WASHER DETAIL



06-24-2010	PRODUCT CODE:
GFD7_487	MFM 6M 44GP

Drawing Date: 05/26/11

Time: 16:33:43:38

MODEL #:	JOB #:
AGENT:	Web999137 001 B

#	REVISION	DATE	BY
--	ORIGINAL DRAWING		WEB

SAFE AND SECURE

www.cornelliron.com

UL FIREMISER GUIDE ASSEMBLY
5-3/4" PAKKOFF

JOB: Insulated Rolling Fire Door

CONTRACTORS:	ARCHITECT:
--------------	------------