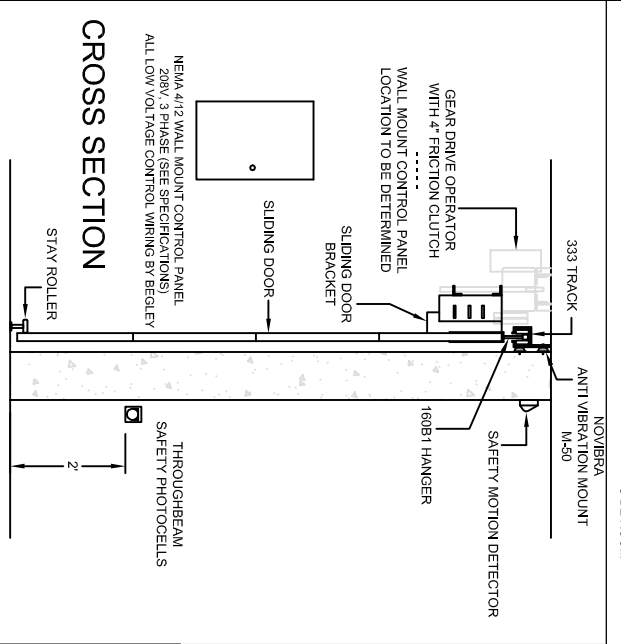
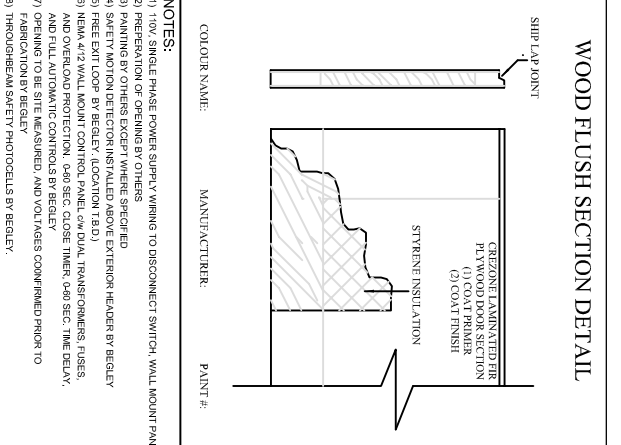


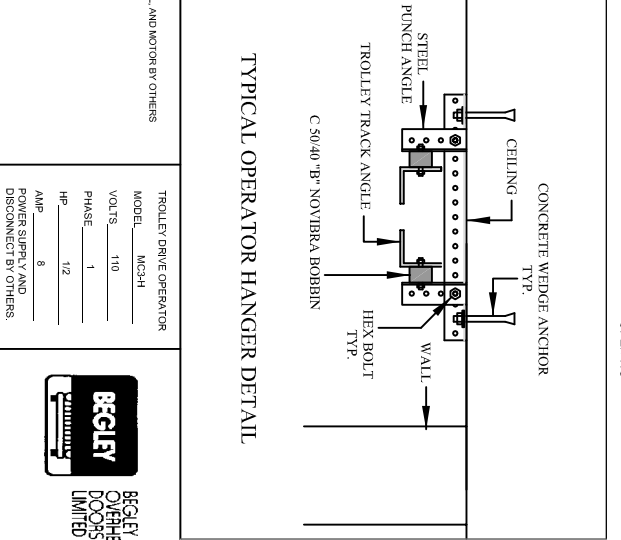
ELEVATION VIEW



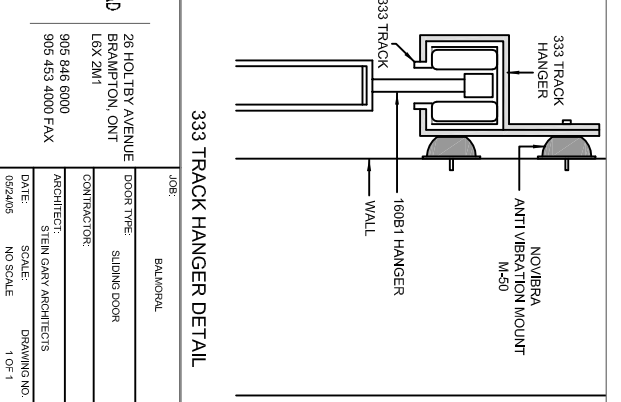
CROSS SECTION



WOOD FLUSH SECTION DETAIL



TYPICAL OPERATOR HANGER DETAIL



333 TRACK HANGER DETAIL

- NOTES:
- 1) 120V SINGLE PHASE POWER SUPPLY WIRING TO DISCONNECT SWITCH, WALL MOUNT PANEL, AND MOTOR BY OTHERS
 - 2) PREPARATION OF OPENING BY OTHERS
 - 3) PAINTING BY OTHERS EXCEPT WHERE SPECIFIED
 - 4) SAFETY MOTION DETECTOR INSTALLED ABOVE EXTERIOR HEADER BY BEGLEY
 - 5) FREE EXIT LOOP BY BEGLEY, (LOCATION T.B.D.)
 - 6) NEMA 4/12 WALL MOUNT CONTROL PANEL, 24V DUAL TRANSFORMERS, FUSES, AND OVERLOAD PROTECTION, 0.60 SEC. CLOSE TIMER, 0.60 SEC. TIME DELAY, AND FALL AUTOMATIC CONTROL BY BEGLEY
 - 7) FABRIC FINISH ASSURED, AND VOLTAGES CONFIRMED PRIOR TO FABRIC FINISH BY BEGLEY
 - 8) THROUGHBEAM SAFETY PROTOCOLS BY BEGLEY.

TROLLEY DRIVE OPERATOR	MODEL	MCH-3H
VOLTS	110	
PHASE	1	
HP	1/2	
AMP	8	
POWER SUPPLY AND DISCONNECT BY OTHERS.		

26 HOLLIBY AVENUE
BRAMPTON, ONT
L6X 2M1
905 846 6000
905 453 4000 FAX

JOB:	BALUNOVAL
DOOR TYPE:	SLIDING DOOR
CONTRACTOR:	
ARCHITECT:	STEIN GARY ARCHITECTS
DATE:	09/24/05
SCALE:	NO SCALE
DRAWING NO.:	10-1